



## GREEN HOTEL WITH A MODERN TWIST

More experience than hotel Both a destination and a journey

### A FIRST CLASS HOTEL IN KHAO YAI



### A PRIVATE BALCONIES WITH MOUNTAINS VIEW



### IS THE KEY TO A WONDERFUL STAY



### THE MODERN NATURAL CONCEPT



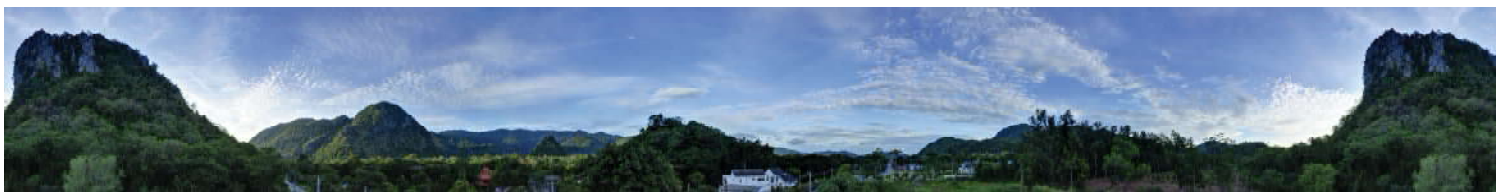
Splendid Khaoyai is far from Bangkok, about 2 hours by car. The hotel is located 400 meters above sea level, so the weather is cooler than Bangkok.

The hotel has been developed under the "Modern Natural" concept and embracing a scenic mountain range. This carefully designed project is in harmony with nature to correspond with the modern and unique lifestyles of its hotel. It is perfect as a relaxing vacation for the new generation. The design concept focuses on energy saving through a distinct location and direction, the use of ecologically friendly materials, the determination of shapes, colors and spaces with naturally available components such as trees, water and stones.

### LOCATION

Splendid Khaoyai is located on Kudkhla-Pansuek road that is the short cut road heading towards Khaoyai. The hotel is surrounded with many attractive places and restaurants such as Khaoyai National Park, Khaoyai Golf Club, Palio Khao yai walking street, Pen Lao restaurant, PB Winery etc.

### EMBRACING A SCENIC MOUNTAIN RANGE

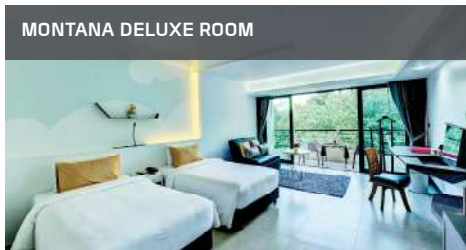


## HOTEL ACCOMMODATIONS



**DELUXE STUDIO ROOM**

- The room total of 21 rooms
- Location 1-3 Fl.
- Approximately 45 SQ. M.
- 2 Pax (Maximum 3 Pax with Extra Beds)
- Twin/Double Bedrooms
- One Bathroom with bathtub and separate Shower
- Private Balcony



**MONTANA DELUXE ROOM**

- The room total of 12 rooms
- Location 3-5 Fl.
- Approximately 41 SQ. M.
- 2 Pax (Maximum 3 Pax with Extra Beds)
- Twin/Double Bedrooms
- One Bathroom with bathtub and separate Shower
- Private Balcony



**SPLENDID DELUXE ROOM**

- The room total of 12 rooms
- Location 3-5 Fl.
- Approximately 44 SQ. M. with terrace (6.5 SQ. M.)
- 2 Pax (Maximum 3 Pax with Extra Beds)
- Twin/Double Bedrooms
- One Bathroom with bathtub and separate Shower
- Private Balcony



**ROCK SUITE ROOM**

- The room total of 3 rooms
- Location 2-4 Fl.
- Approximately 60 SQ. M.
- 2 Pax (Maximum 4 Pax with Extra Beds)
- One Double Bedroom at the corner
- One Bathroom with bathtub and separate Shower
- Living room with restroom
- Dining and Pantry area
- Private Balcony



**FORESTA DUPLEX ROOM**

- The room total of 2 story rooms
- Location 5 Fl.
- Approximately 90.0 SQ. M.
- 2 Pax (Maximum 4 Pax with Extra Beds)
- Twin/Double Bedrooms with bathroom with bathtub and separate shower
- One Bathroom with bathtub and separate Shower
- Living room with Shower room
- Dining and Pantry area
- Private Balcony



**FLORAL FAMILY SUITE ROOM**

- The room total of 1 rooms
- Location 5 Fl.
- Approximately 104 SQ. M.
- 4 Pax (Maximum 6 Pax with Extra Beds)
- One Twin Bedroom (two 3.5 ft.-beds) with bathroom with bathtub and separate shower
- One Double Bedroom (6 ft. bed) with bathroom with bathtub and separate shower
- Living room with restroom
- Dining and Pantry area
- Large Private Balcony



**PRESIDENT SUITE ROOM**

- The room total of 1 rooms
- Location 5 Fl.
- Approximately 160.0 SQ. M.
- 4 Pax (Maximum 6 Pax with Extra Beds)
- One Twin Bedroom (two 3.5 ft. beds) with bathroom with bathtub and separate shower
- One Double Bedroom (6 ft. bed) with bathroom with Jacuzzi and separate shower
- Living room with restroom
- Dining and Pantry area
- Sky view Swimming Pool with private Terrace (Panoramic Khaoyai view)

## THE MODERN NATURAL CONCEPT

- Individually controlled air conditioning unit
- 49" LED Smart television with internet (satellite and local channels)
- Mini Component (Suite Room only)
- DVD Player
- Telephone Line
- Hot & Cold water
- Magnifying Mirror (Suite Room only)
- Refrigerator
- Hair dryer
- Microwave (Suite Room only)
- Safe deposit box
- Bathrobes and slippers
- Stationery
- Electric Kettle with complimentary coffee and Tea
- Free bottles of Drinking Water
- Bathroom amenities
- Free Wi-Fi

## FACILITIES & SERVICES

- Restaurants
- Function Room
- Swimming pool
- Fitness room
- Kids zone
- Welcome drink and cold towel upon arrival
- Morning call
- Free Wi-Fi
- Library/Games/DVD
- Laundry and Pressing service
- Private Dinner or Picnic
- Tourist information and service
- Car parking
- Taxi service
- Airport Transfer
- Car parking
- Tropical Garden
- 24 hrs. Security Service

## FOOD & BEVERAGE



### ARAMIS RESTAURANTE

Type of Kitchen: A wide selection of Thai & Western cuisine, Breakfast  
Open Daily

### CLIFF & POOL CAFE

Type of Kitchen: Snack and Beverage  
Open Daily

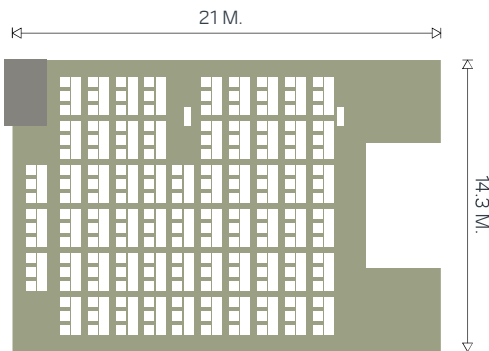
THE SKY TERRACE for any occasions (Activities and Parties)

### ROOM SERVICE

Open Daily

## BANQUET & SEMINAR

Functions rooms that can cater for banquets, meetings the cutting-edge meeting facility elaborates efficient functions enhanced with multimedia technology as well as courteous stewards and stewardesses promptly at your service.

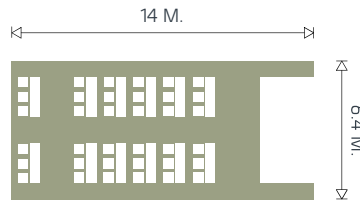


### CAVE HALL FUNCTION ROOM

Area 296 SQ. M.

Classroom Seating 156 persons

Theater Seating 297 persons



### MONTE FUNCTION ROOM

Area 89.6 SQ. M.

Classroom Seating 30 persons

Theater Seating 50 persons

## EQUIPMENT & AUDIO VISUAL

- Paper Notes & Pencils
- CD/VCD/DVD Player
- Portable Screens
- Tape recorder
- White Board
- Standard Audio Set
- Flip Chart
- Wired/Wireless Microphone
- Podium with microphone
- Stage
- Pointer
- LCD Projector
- Digital Virtualizer

## CONTACT US

### SPLENDID HOTEL @ KHAOYAI

288 Moo 10 Kudkhla-Pansuek Rd., Moo See, Pakchong,  
Nakhon Ratchasima 30130

Tel. +66 (44) 297 750-2 Fax +66 (44) 297 753

Mobile +66 (8) 5679 1331, +66 (9) 5205 1819

Email reservation@splendidkhaoyai.com

Website www.splendidkhaoyai.com

### BANGKOK OFFICE

503 KSL Tower 10th Floor, Sri Ayuthaya Road, Phayathai,  
Ratchathewi, Bangkok 10400

Tel. +66 (2) 642 6154-7 Fax +66 (2) 642 6159

